

REGIONAL WRC-23 PREPARATIONS AND EMERGING POSITIONS IN CEPT

Alexandre Kholod, Chairman CEPT CPG
Federal Office of Communications, Switzerland

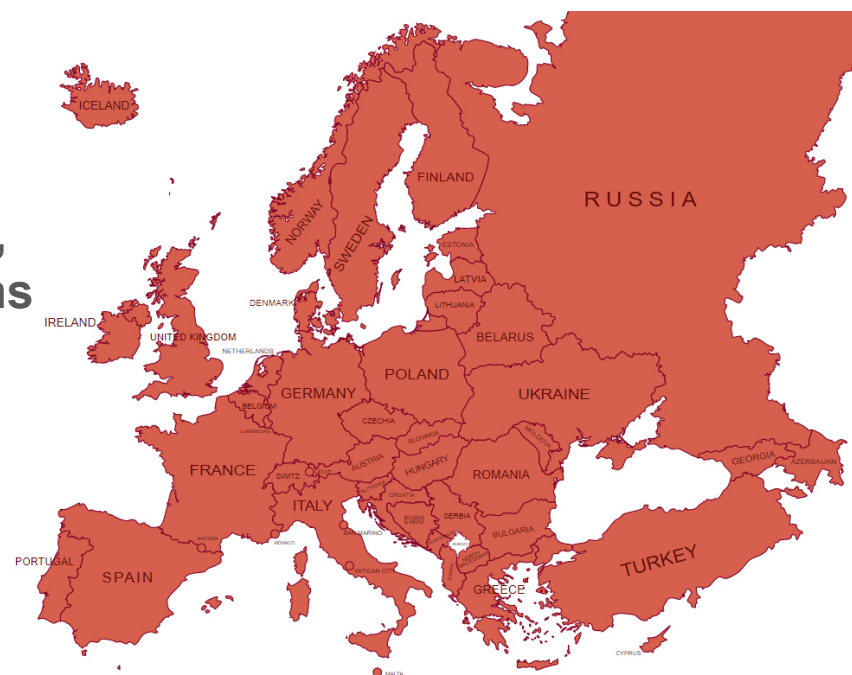


7th **ASIA-PACIFIC**
SPECTRUM MANAGEMENT
CONFERENCE
24, 25, 27 May 2021



European Conference of Postal and Telecommunications Administrations

- Policy makers and regulators from 48 countries
- Harmonisation of telecommunication, radio spectrum, and postal regulations
- Three autonomous committees
ECC **Com-ITU** **CERP**



Conference Preparatory Group (CPG)

A forum for CEPT Administrations and ECC Observers

European positions for ITU World Radiocommunication Conferences and Radiocommunication Assemblies ("10 vs 6" guidance applies)

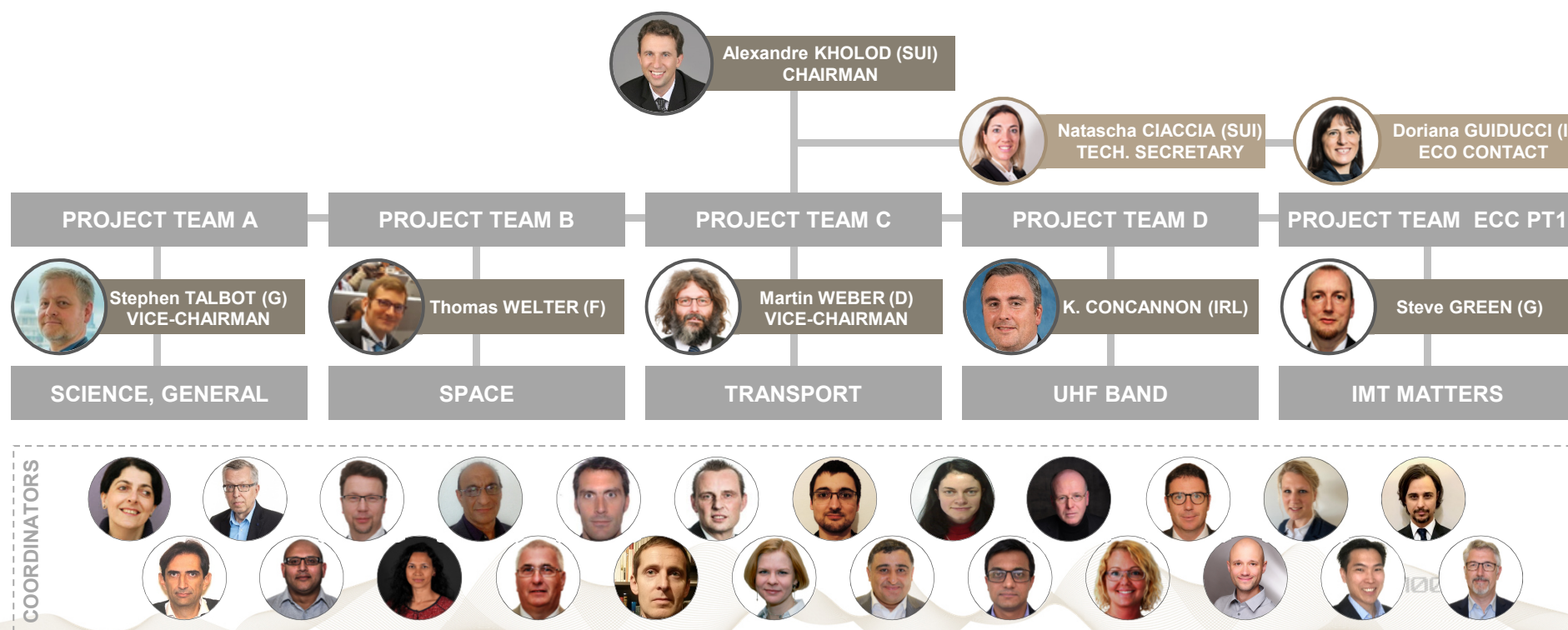


Common positions in respect to ITU-R meetings

Dialogue and cooperation with regional organisations outside CEPT

Coordinated procedures for CEPT actions

CPG organisational structure



Agenda of WRC-23

MOBILE



SPACE



TRANSPORT



SCIENCE



UHF review 🔥

- IMT in mid-bands 🔥 ✓
- Mobile in 3.6-3.8 GHz ✓
- HAPS for IMT (HIBS)
- IMT in fixed service ✓

- GSO ESIM ✓
- NGSO ESIM ✓
- Inter-satellite links ✓
- Data via satellite ✓
- Protection of Galileo ✓
- Satellite procedures ✓

Fixed satellite service ✓

- Unmanned aircraft systems ✓
- Sub-orbital vehicles ✓
- Aeronautical VHF comms. ✓
- Aeronautical non-safety aps. ✓
- Aeronautical systems digitis. ✓
- GMDSS ✓

- Space-borne radars
- Space weather ✓
- Earth exploration ✓

Space research ✓

from CEPT proposals to WRC-19

✓ preliminary CEPT view is available

Mobile agenda (1/2)

470-694
MHz

3 300-3 400
MHz

3 600-3 800
MHz

4 800-4 990
MHz

6 425-7 025
MHz

7 025-7 125
MHz

10-10.5
GHz

IMT in FS

First preliminary views:

The regulatory provisions applicable to IMT stations in 3 300-3 400 MHz for some countries in Region 1 and Region 2 should be maintained. No IMT identification in that band for the entire Region 1



Consideration of an upgrade of the mobile, except aeronautical mobile, allocation to primary in 3 600-3 800 MHz subject to the conditions that the current use under the existing CEPT regulatory framework can be continued

| Region 1 |
|------------------|
| 3 600-4 200 |
| FIXED |
| FIXED-SATELLITE |
| (space-to-Earth) |
| Mobile |

Mobile agenda (2/2)

470-694
MHz

3 300-3 400
MHz

3 600-3 800
MHz

4 800-4 990
MHz

6 425-7 025
MHz

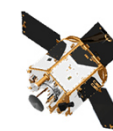
7 025-7 125
MHz

10-10.5
GHz

IMT in FS

First preliminary views:

- AMS and MMS stations located in international airspace or waters and operated in 4 800-4 990 MHz shall be protected on the basis of the pfd limit provided in RR 5.441B (under revision)
- Identification of 10.0-10.5 GHz frequency band for IMT in Region 2 should not impose any additional regulatory or technical constraints to EESS stations because of their global coverage
- No changes to Radio Regulations are necessary to address the usage of the frequency bands allocated to the Fixed Service by IMT technologies



101100101011

Satellite agenda (1/2)

STRENGTHEN THE USE OF EXISTING SPECTRUM

GET MORE SPECTRUM

First preliminary views:

- The operation of aeronautical earth stations in 12.75-13.25 GHz is supported with conditions that protect existing services in this band and in adjacent bands. The operation of earth stations on vessels is supported pending on the results of studies to protect the currently allocated services
- The operation of non-GSO ESIM in FSS in 17.7-18.6 GHz, 18.8-19.3 GHz and 19.7-20.2 GHz (s-E) and 27.5-29.1 GHz and 29.5-30 GHz (E-s) is supported subject to technical and operational requirements that ensure the protection of GSO networks and radio services allocated in the same and adjacent bands



Satellite agenda (2/2)

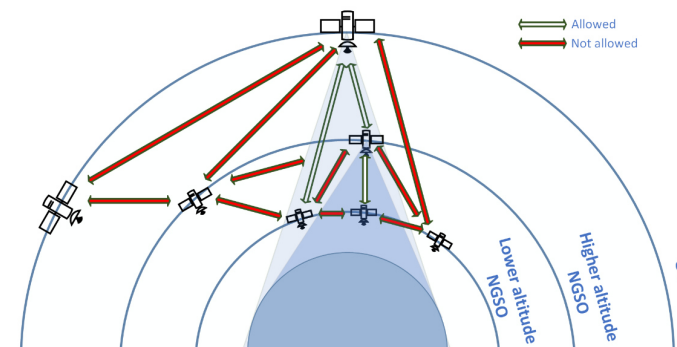
STRENGTHEN THE USE OF EXISTING SPECTRUM

GET MORE SPECTRUM

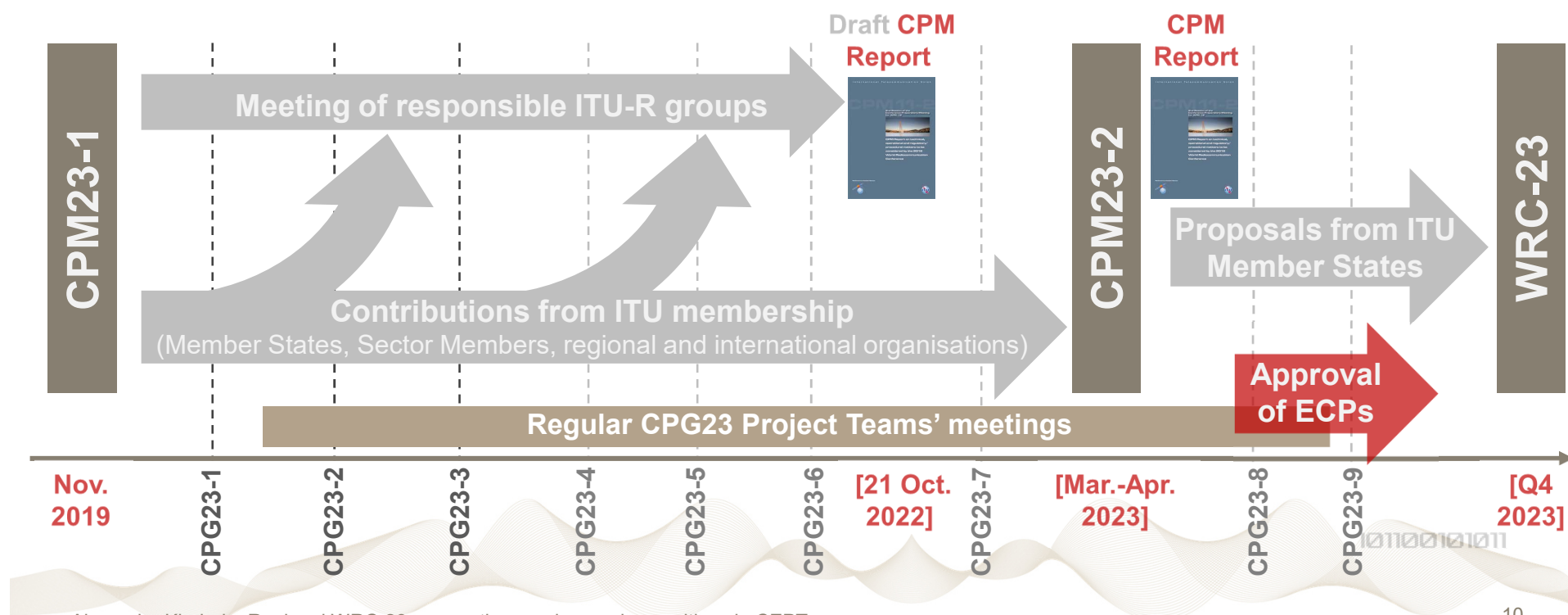
First preliminary views:

The operation of satellite-to-satellite links in 11.7-12.7 GHz, 18.1-18.6 GHz, 18.8-20.2 GHz, and 27.5-30 GHz is supported under so called “the cone of coverage” concept, and as long as no new constraints to GSOs/NGSOs are imposed

An allocation of 17.3-17.7 GHz to FSS (s-E) in Region 2 is supported given the equivalent allocation in Region 1 and provided the feasibility for such allocation is confirmed by studies



CPG23 timeline



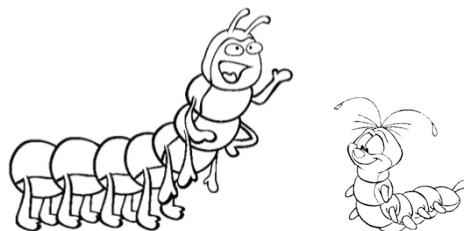
Final remarks

Consensus seeking studies are on going

Preliminary CEPT views are emerging on many WRC-23 agenda items

Consensus seeking negotiations will take place at the conference

Interregional dialog and coordination are required to be successful at WRC-23



*Strength and speed are useful, son,
but coordination is crucial !*

**Thank you
for your attention**

101100101011